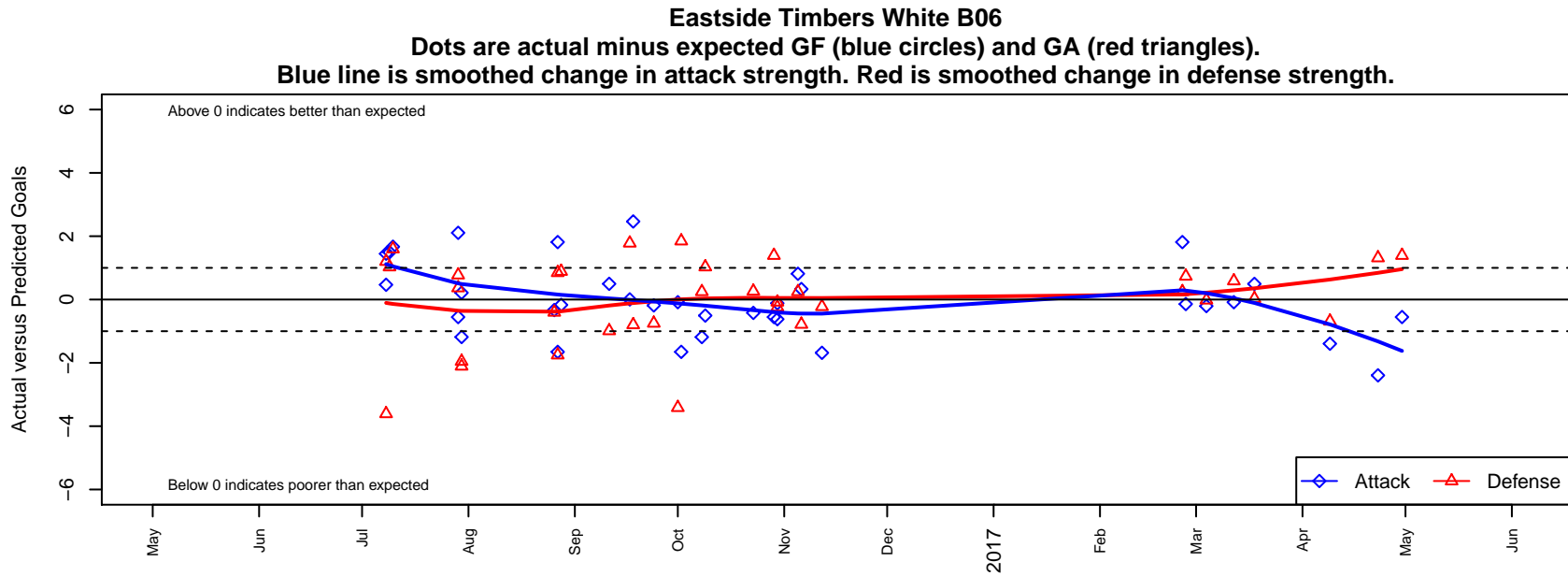


## Eastside Timbers White B06

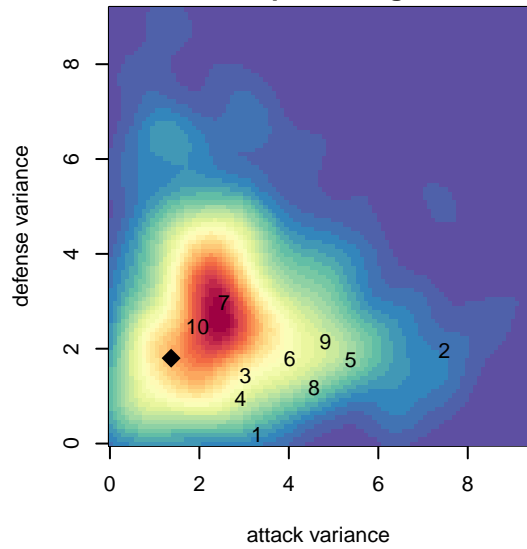
Eastside United FC  
 Gresham, OR  
 B06 total strength=556  
 attack=0.38 defense=0.48  
 fall league = PTT B06 Div 2 Northeast  
 spr league = Spr OYS B06 Div 2 Orange

alt names used:  
 EASTSIDE TIMBERS WHITE  
 Eastside Timbers White  
 EastSide Timbers 06B White  
 Eastside timbers White  
 EastSide Timbers 06B White  
 EastSide Timbers 06B White

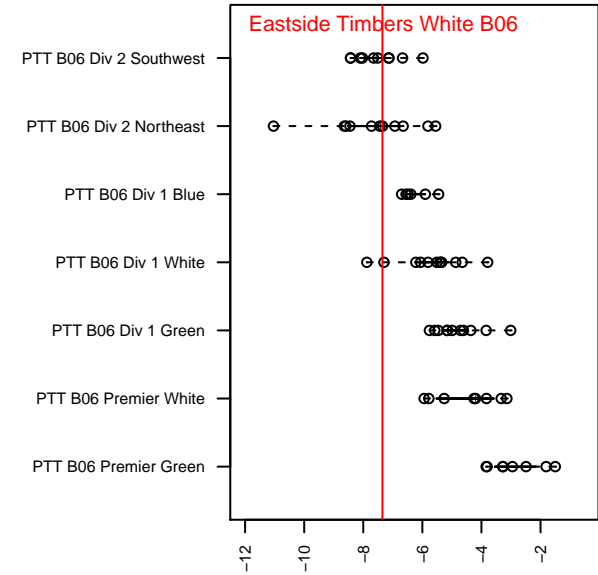
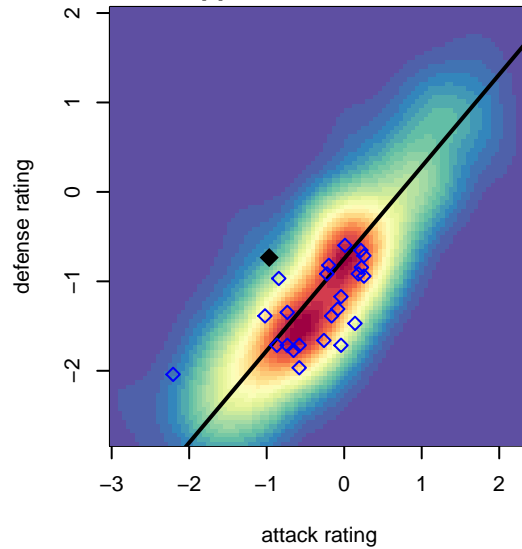
Venues played:  
 2016 PCU Summer Classic U11 Bronze  
 2016 Portland Cup Silver U11  
 2016 Summer Slam Bronze U11  
 2016 PTT B06 Division 2 Northeast  
 2016 OYS Founders Cup B06  
 2016 Spr OYS B06 Division 2 Orange



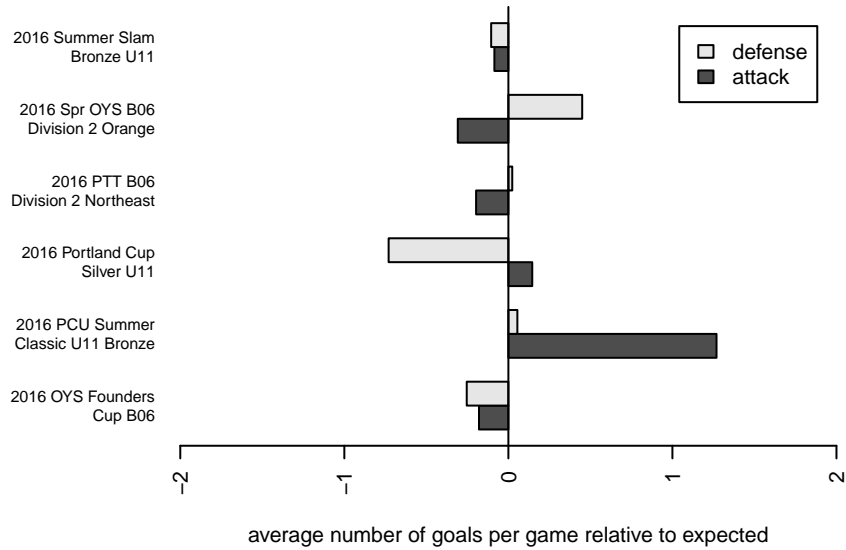
**attack and defense variance (black dot)  
relative to other teams  
and top 10 in region**



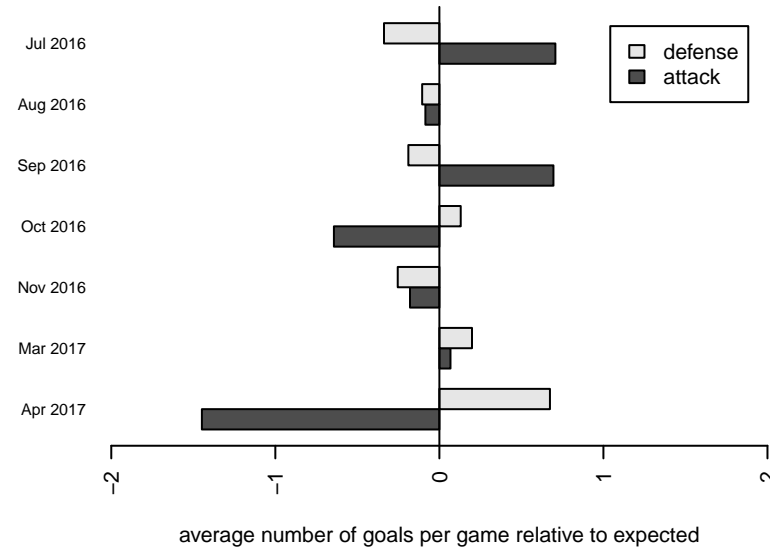
**attack and defense rating  
relative to others at age  
and all opponents in last 13 months**



**Performance relative to 13 month average**



**Performance relative to 13 month average**



| <b>date</b> | <b>home</b>                    |   | <b>away</b>                    |   | <b>venue</b>                       | <b>pred.home</b> | <b>pred.away</b> |
|-------------|--------------------------------|---|--------------------------------|---|------------------------------------|------------------|------------------|
| 2017-04-30  | Eastside Timbers White B06     | 1 | Saints –Unk B06                | 1 | 2016 Spr OYS B06 Division 2 Orange | 1.55             | 2.39             |
| 2017-04-23  | THUSC Adamantium B06           | 0 | Eastside Timbers White B06     | 0 | 2016 Spr OYS B06 Division 2 Orange | 1.32             | 2.40             |
| 2017-04-09  | Eastside Timbers White B06     | 1 | THUSC Adamantium B06           | 2 | 2016 Spr OYS B06 Division 2 Orange | 2.40             | 1.32             |
| 2017-03-18  | NEU Azul B06                   | 2 | Eastside Timbers White B06     | 3 | 2016 Spr OYS B06 Division 2 Orange | 2.03             | 2.51             |
| 2017-03-12  | Eastside Timbers White B06     | 3 | BSC Portland Gold B06          | 1 | 2016 Spr OYS B06 Division 2 Orange | 3.08             | 1.59             |
| 2017-03-04  | Eastside Timbers White B06     | 1 | FC Salmon Creek Blue B06       | 1 | 2016 Spr OYS B06 Division 2 Orange | 1.21             | 0.98             |
| 2017-02-26  | Eastside Timbers White B06     | 2 | ETFC Bayern Grey B06           | 0 | 2016 Spr OYS B06 Division 2 Orange | 2.14             | 0.73             |
| 2017-02-25  | Washington Timbers White 2 B06 | 1 | Eastside Timbers White B06     | 4 | 2016 Spr OYS B06 Division 2 Orange | 1.25             | 2.19             |
| 2016-11-12  | Eastside Timbers White B06     | 0 | Southside SC Blanco B06        | 2 | 2016 OYS Founders Cup B06          | 1.68             | 1.78             |
| 2016-11-06  | Westside Timbers Samba B06     | 2 | Eastside Timbers White B06     | 2 | 2016 OYS Founders Cup B06          | 1.22             | 1.67             |
| 2016-11-05  | Washington Timbers White 2 B06 | 1 | Eastside Timbers White B06     | 3 | 2016 OYS Founders Cup B06          | 1.25             | 2.19             |
| 2016-10-30  | PCU Black 2 B06                | 1 | Eastside Timbers White B06     | 2 | 2016 PTT B06 Division 2 Northeast  | 0.92             | 2.62             |
| 2016-10-30  | NEU Black B06                  | 3 | Eastside Timbers White B06     | 1 | 2016 PTT B06 Division 2 Northeast  | 2.76             | 1.12             |
| 2016-10-29  | Saints –Unk B06                | 1 | Eastside Timbers White B06     | 1 | 2016 PTT B06 Division 2 Northeast  | 2.39             | 1.55             |
| 2016-10-23  | LYS White B06                  | 0 | Eastside Timbers White B06     | 3 | 2016 PTT B06 Division 2 Northeast  | 0.26             | 3.42             |
| 2016-10-09  | Eastside Timbers White B06     | 2 | NEU Azul B06                   | 1 | 2016 PTT B06 Division 2 Northeast  | 2.51             | 2.03             |
| 2016-10-08  | Eastside Timbers White B06     | 1 | Washington Timbers White 2 B06 | 1 | 2016 PTT B06 Division 2 Northeast  | 2.19             | 1.25             |
| 2016-10-02  | Eastside Timbers White B06     | 0 | Pacific FC Rangers B06         | 1 | 2016 PTT B06 Division 2 Northeast  | 1.65             | 2.85             |
| 2016-10-01  | Eastside Timbers White B06     | 3 | BSC Portland Gold B06          | 5 | 2016 PTT B06 Division 2 Northeast  | 3.08             | 1.59             |
| 2016-09-24  | Eastside Timbers White B06     | 2 | SESC Chieftains White B06      | 2 | 2016 PTT B06 Division 2 Northeast  | 2.18             | 1.25             |
| 2016-09-18  | NEU Silver B06                 | 3 | Eastside Timbers White B06     | 4 | 2016 PTT B06 Division 2 Northeast  | 2.20             | 1.53             |
| 2016-09-17  | Eastside Timbers White B06     | 1 | Foothills SC Celtic Green B06  | 1 | 2016 PTT B06 Division 2 Northeast  | 1.00             | 2.78             |
| 2016-09-11  | BSC Portland White B06         | 3 | Eastside Timbers White B06     | 3 | 2016 PTT B06 Division 2 Northeast  | 2.01             | 2.50             |
| 2016-08-28  | Eastside Timbers White B06     | 1 | WUSC Navy B06                  | 1 | 2016 Summer Slam Bronze U11        | 1.17             | 1.89             |
| 2016-08-27  | Pacific FC Rangers B06         | 2 | Eastside Timbers White B06     | 0 | 2016 Summer Slam Bronze U11        | 2.85             | 1.65             |
| 2016-08-27  | Eastside Timbers White B06     | 4 | Washington Timbers White 2 B06 | 3 | 2016 Summer Slam Bronze U11        | 2.19             | 1.25             |
| 2016-08-26  | PCU Black 1 B06                | 2 | Eastside Timbers White B06     | 1 | 2016 Summer Slam Bronze U11        | 1.60             | 1.33             |
| 2016-07-30  | Eastside Timbers White B06     | 1 | Washington Timbers Red 2 B06   | 5 | 2016 Portland Cup Silver U11       | 0.79             | 2.89             |

| <b>date</b> | <b>home</b>                |   | <b>away</b>                |   | <b>venue</b>                       | <b>pred.home</b> | <b>pred.away</b> |
|-------------|----------------------------|---|----------------------------|---|------------------------------------|------------------|------------------|
| 2016-07-30  | Eastside Timbers White B06 | 0 | Thelo Arsenal B06          | 5 | 2016 Portland Cup Silver U11       | 1.18             | 3.05             |
| 2016-07-29  | Eastside Timbers White B06 | 1 | LOSC Black B06             | 2 | 2016 Portland Cup Silver U11       | 1.55             | 2.77             |
| 2016-07-29  | Eastside Timbers White B06 | 3 | FC Portland White B06      | 3 | 2016 Portland Cup Silver U11       | 0.89             | 3.37             |
| 2016-07-10  | Eastside Timbers White B06 | 3 | PCU Black 1 B06            | 0 | 2016 PCU Summer Classic U11 Bronze | 1.33             | 1.60             |
| 2016-07-09  | NEU Azul B06               | 1 | Eastside Timbers White B06 | 4 | 2016 PCU Summer Classic U11 Bronze | 2.03             | 2.51             |
| 2016-07-08  | NEU Silver B06             | 1 | Eastside Timbers White B06 | 2 | 2016 PCU Summer Classic U11 Bronze | 2.20             | 1.53             |
| 2016-07-08  | Saints -Unk B06            | 6 | Eastside Timbers White B06 | 3 | 2016 PCU Summer Classic U11 Bronze | 2.39             | 1.55             |